



Brazos River Authority

Water Supply & System Update

Bell County Water Symposium, November 14, 2023

Presented by
Brad Brunett, Regional Manager – Central & Lower Basins



Our Mission

**To develop, manage, and protect
the water resources of the Brazos River basin**

- **Oldest river authority in Texas**
- **Created by the Texas Legislature in 1929**
- **First entity of its kind in the nation**
- **Self-funded (not appropriated), do not levy taxes**
- **21-member Board appointed by Governor**
- **Territory:**
 - **Extends from the Texas-New Mexico state line west of Lubbock to the Gulf of Mexico near Freeport**
 - **More than 42,000 square miles**
 - **All or part of 76 counties**





Our Business

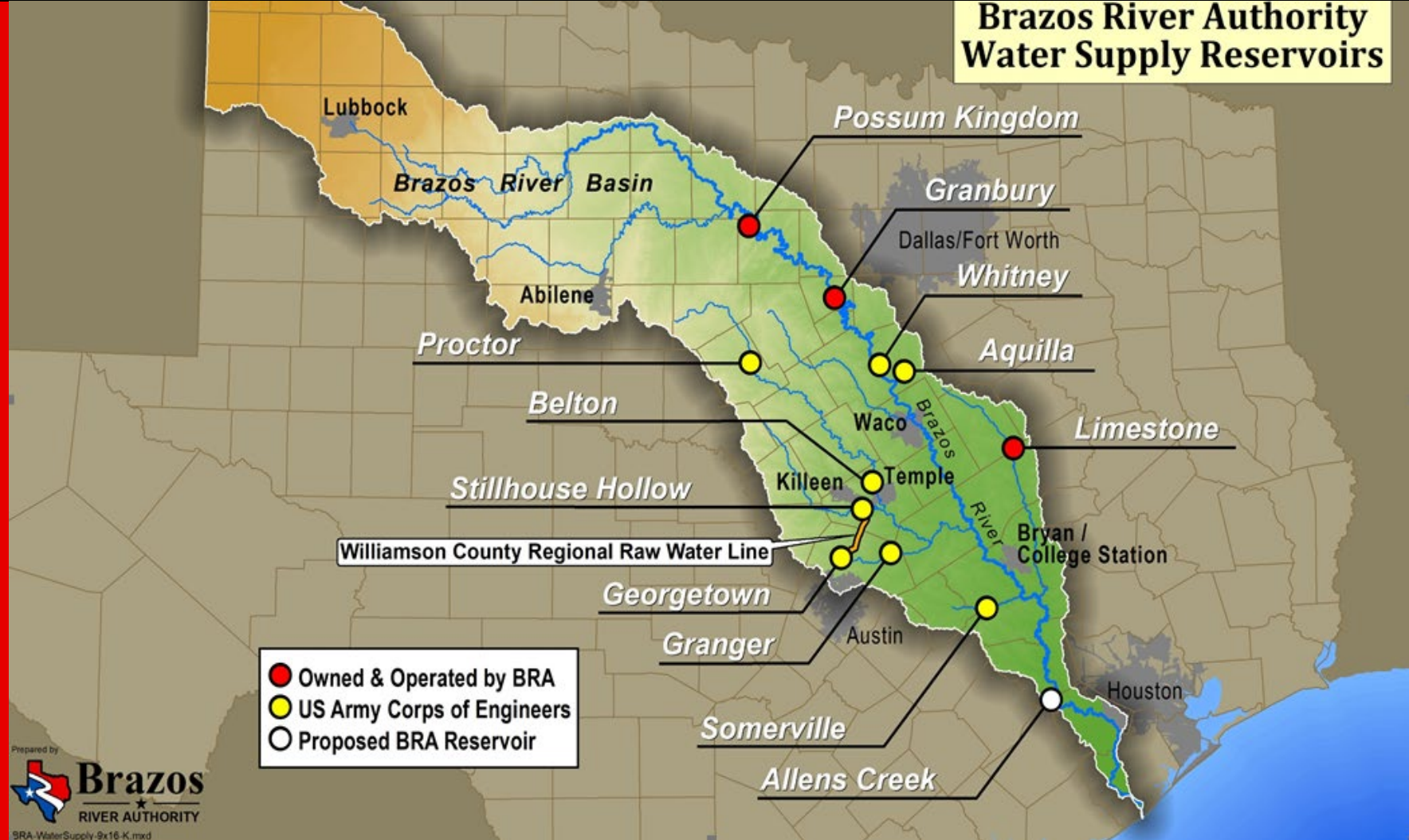
- Raw Water Supply
- Water & Wastewater Treatment
- Water Quality & Environmental Stewardship



Brazos River Authority Water Supply Reservoirs



Brazos River Authority



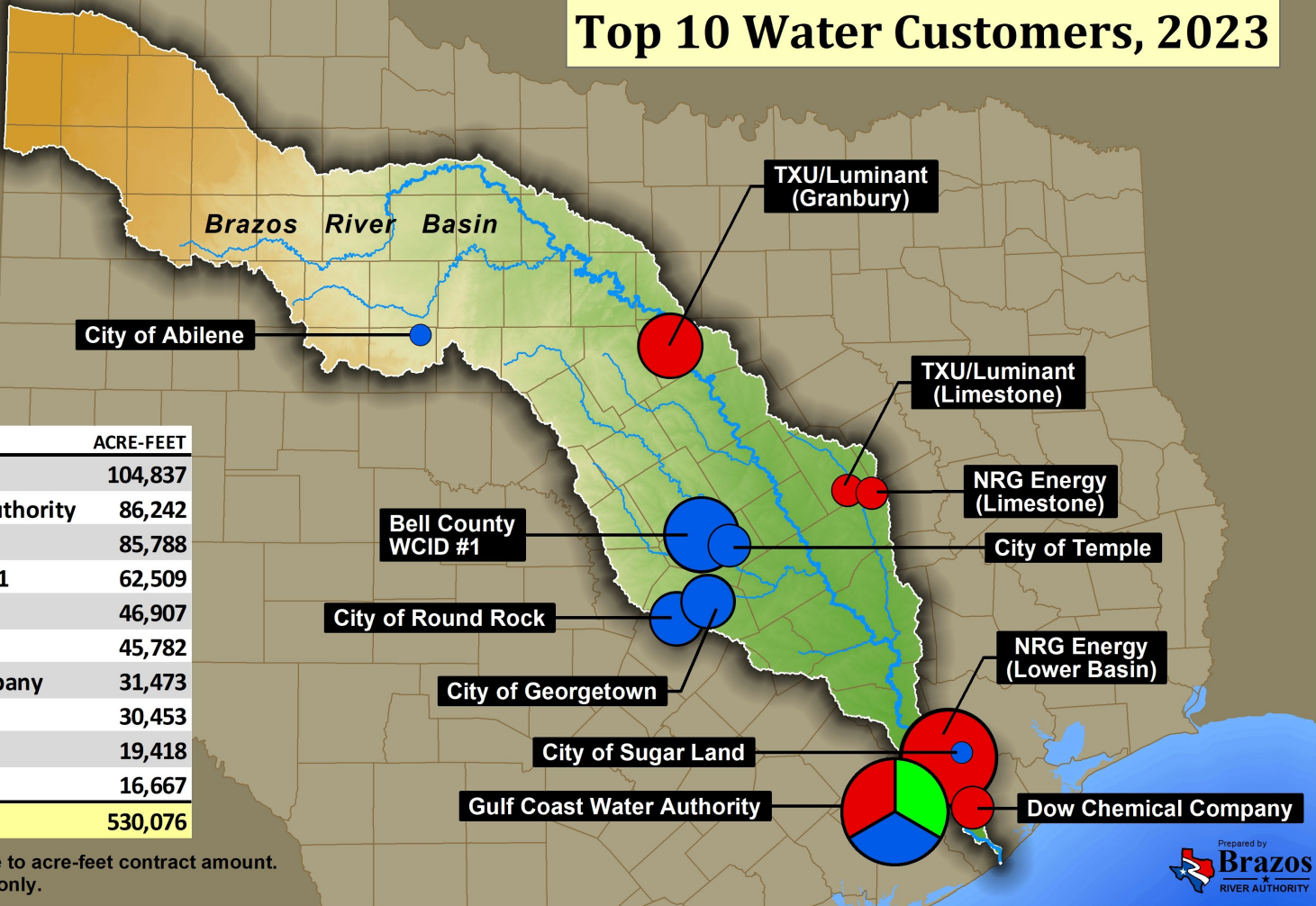


Top 10 Water Customers, 2023

Use Type

- Municipal
- Industrial
- Irrigation

CUSTOMER	ACRE-FEET
NRG Energy	104,837
Gulf Coast Water Authority	86,242
TXU/Luminant	85,788
Bell County WCID # 1	62,509
City of Georgetown	46,907
City of Round Rock	45,782
Dow Chemical Company	31,473
City of Temple	30,453
City of Abilene	19,418
City of Sugar Land	16,667
TOTAL	530,076



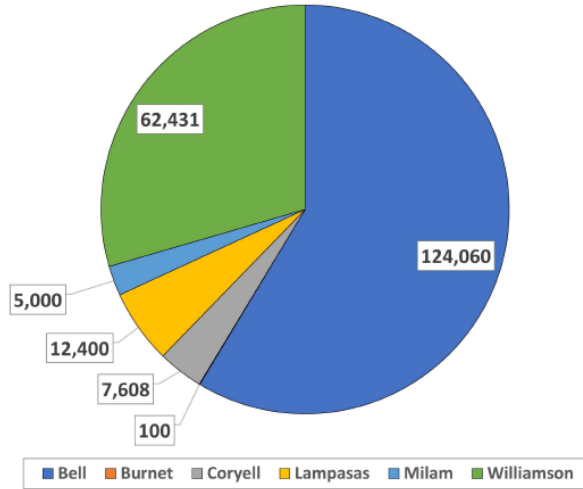
Circle size is proportionate to acre-feet contract amount.
Map is for general display only.



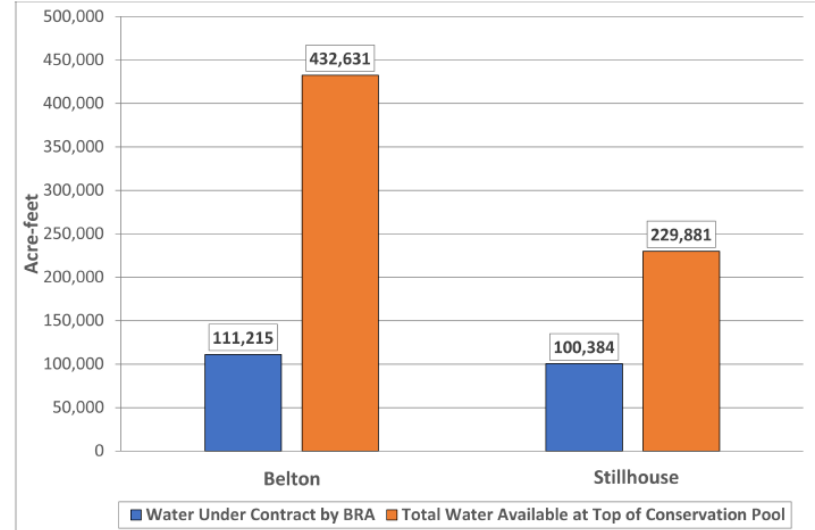
Serving Water Commitments



Current BRA Water Contracts by County for Belton and Stillhouse Hollow Lakes (Acre-Feet)



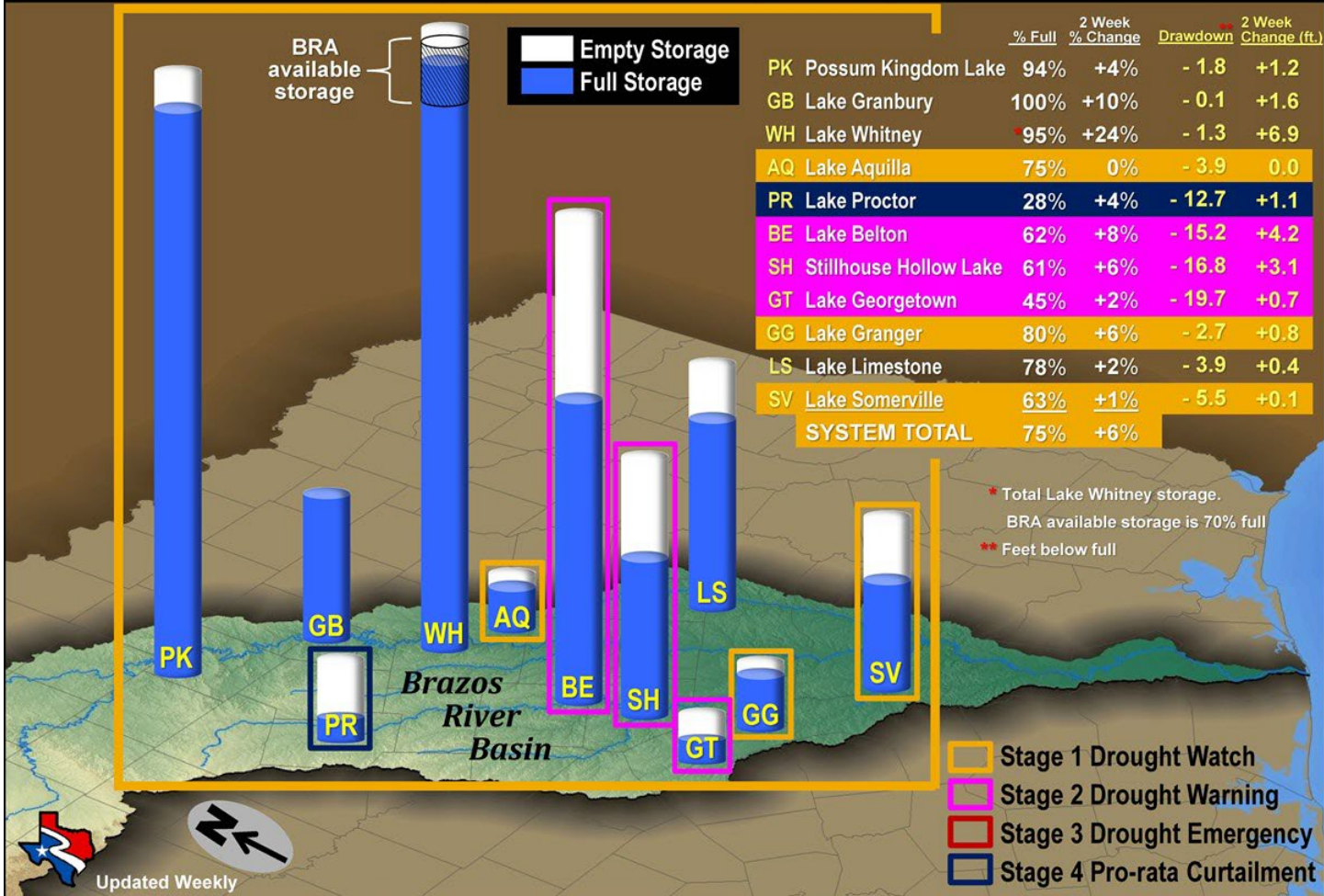
Water Under Contract vs. Total Available Water for Belton and Stillhouse Hollow Lakes



Combined Storage of Authority System is Below Stage 1 Drought Watch Storage Trigger



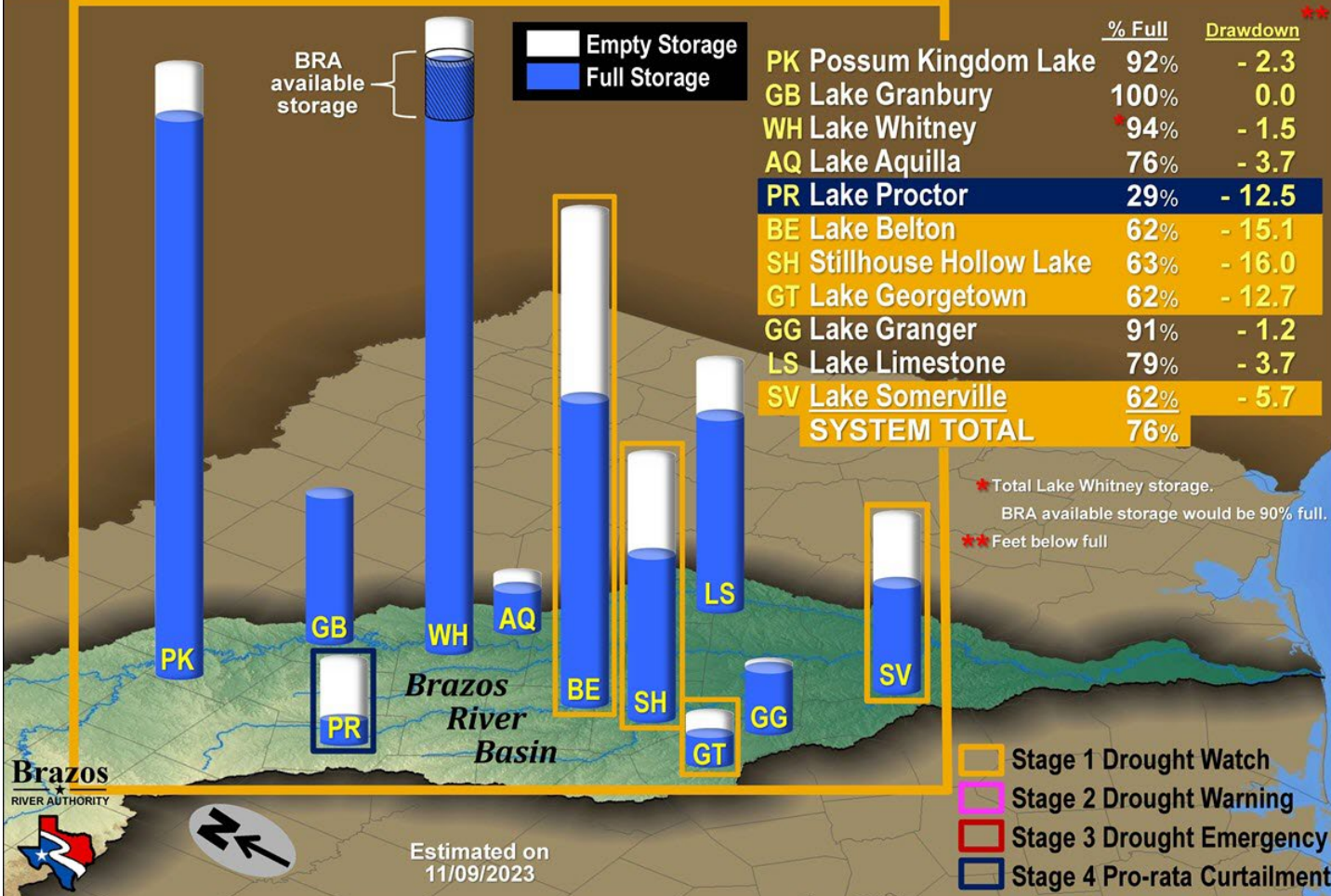
Brazos River Authority



Projected Reservoir Status for December 31, 2023 (based on normal inflows and normal evaporation)

Combined Storage of Authority System is Below Stage 1 Drought Watch Storage Trigger

Brazos River Authority

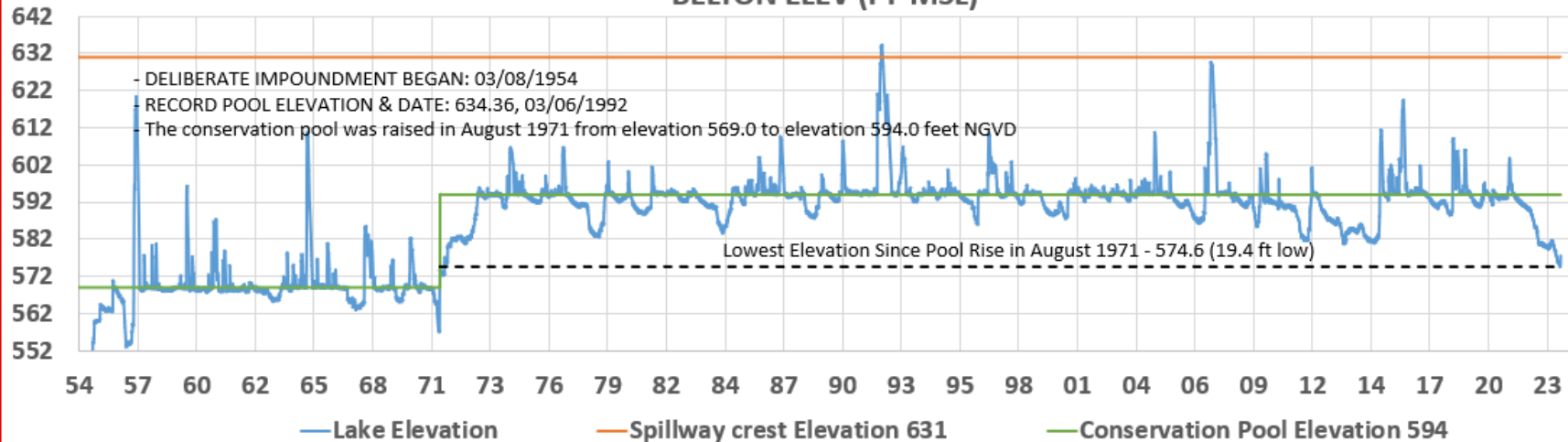


Brazos RIVER AUTHORITY

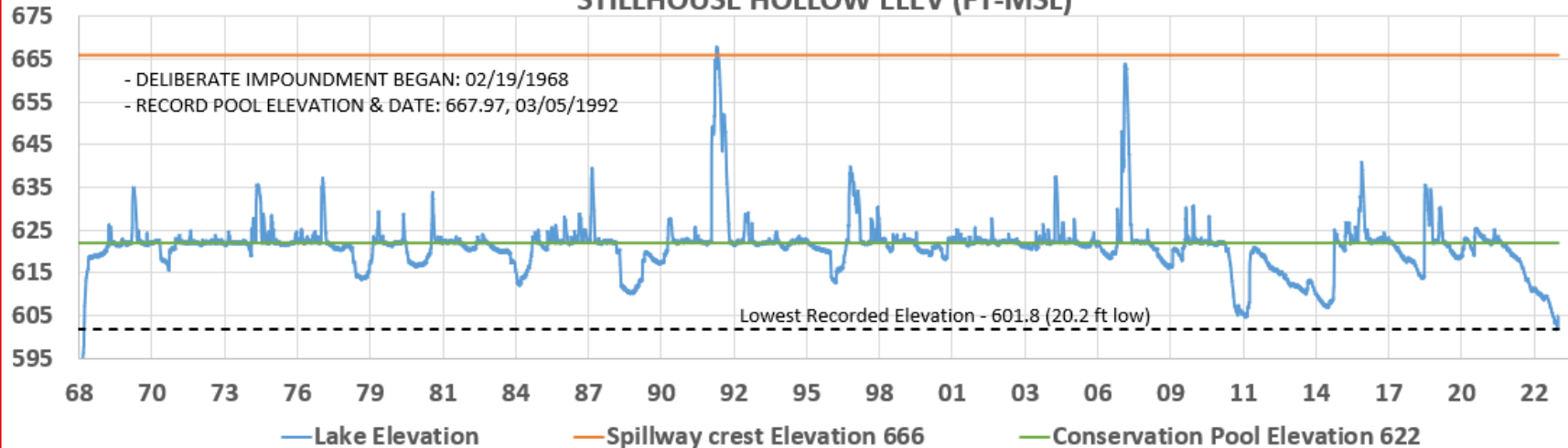


Estimated on 11/09/2023

BELTON ELEV (FT-MSL)



STILLHOUSE HOLLOW ELEV (FT-MSL)



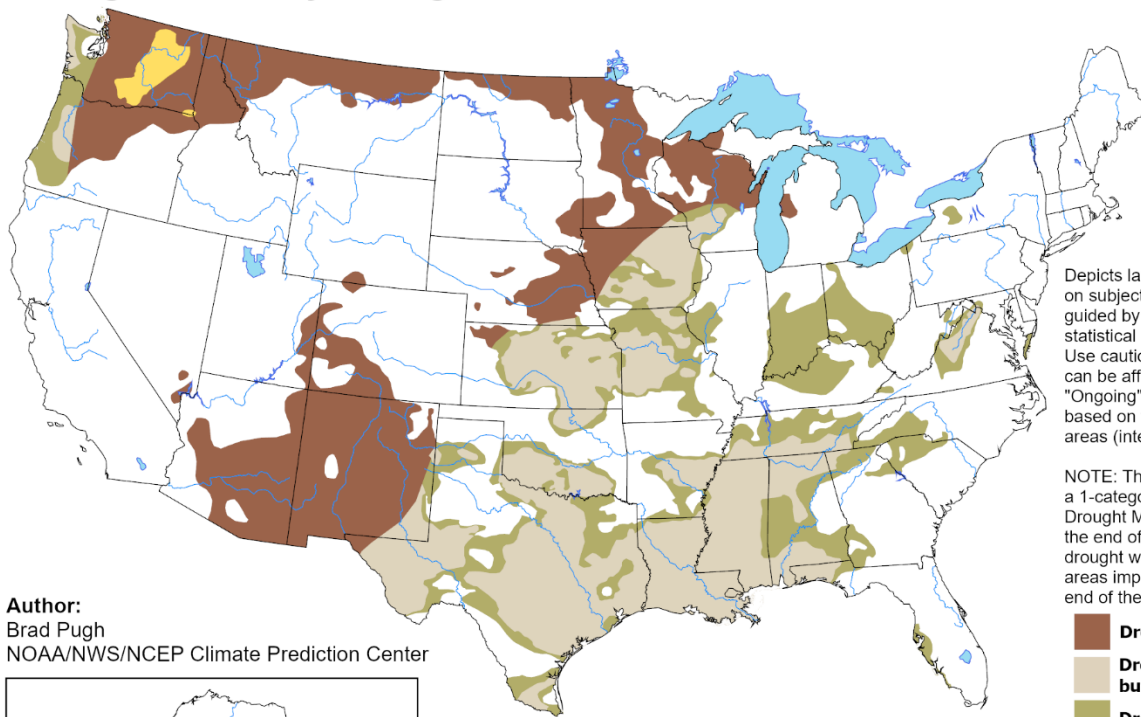


U.S. Seasonal Drought Outlook

Drought Tendency During the Valid Period

Valid for October 19, 2023 - January 31, 2024

Released October 19, 2023

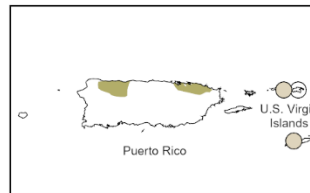
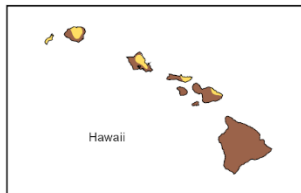


Depicts large-scale trends based on subjectively derived probabilities guided by short- and long-range statistical and dynamical forecasts. Use caution for applications that can be affected by short lived events. "Ongoing" drought areas are based on the U.S. Drought Monitor areas (intensities of D1 to D4).

NOTE: The tan areas imply at least a 1-category improvement in the Drought Monitor intensity levels by the end of the period, although drought will remain. The green areas imply drought removal by the end of the period (D0 or none).

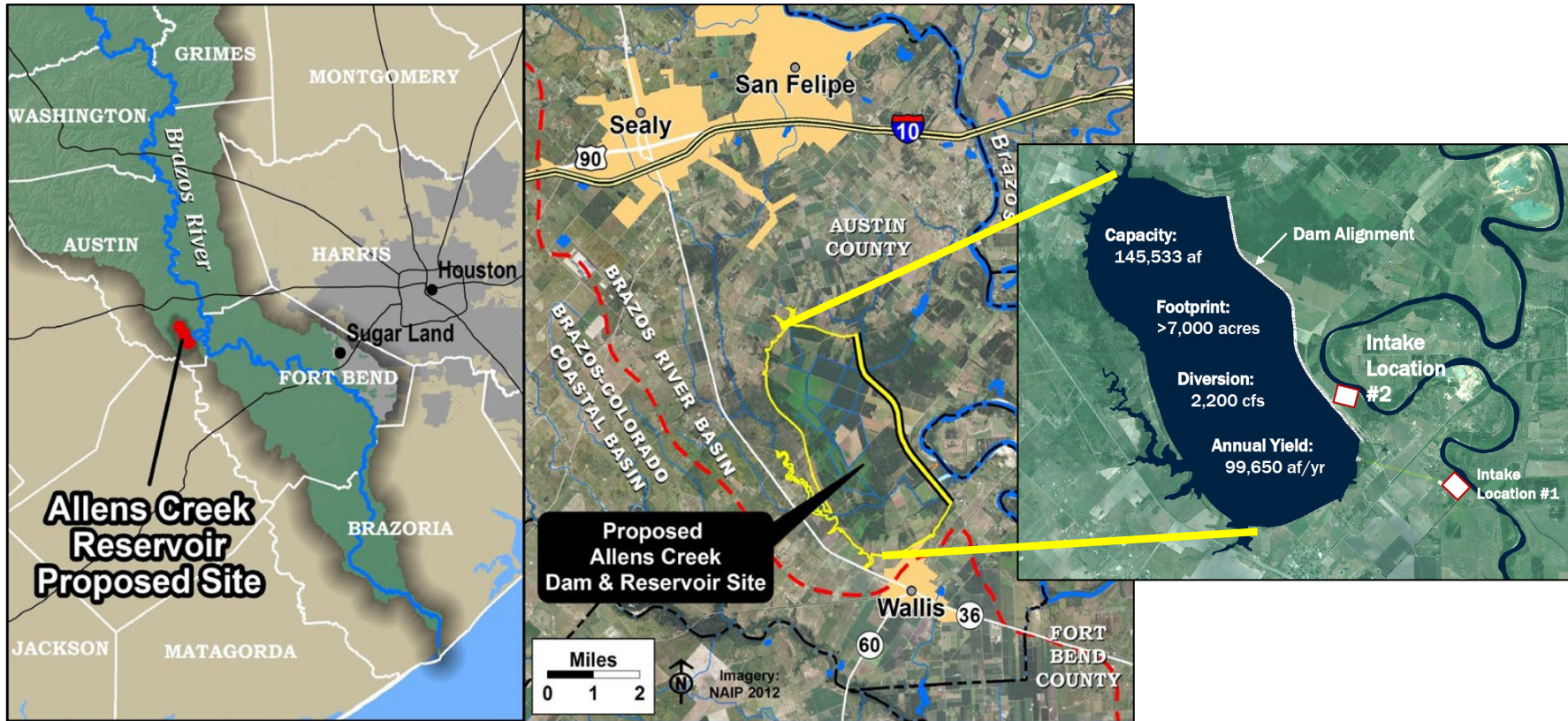
- Drought persists**
- Drought remains, but improves**
- Drought removal likely**
- Drought development likely**
- No drought**

Author:
 Brad Pugh
 NOAA/NWS/NCEP Climate Prediction Center





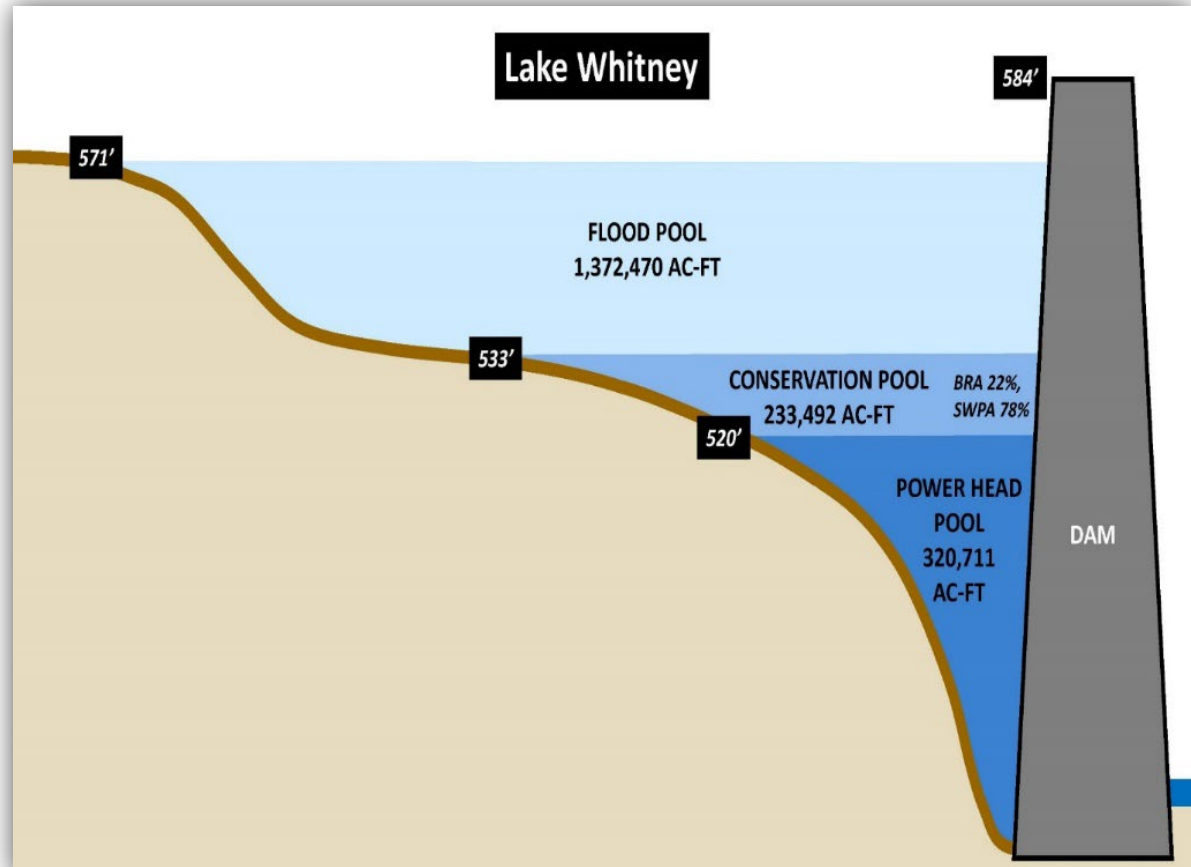
Allens Creek Reservoir





Other Major Initiatives

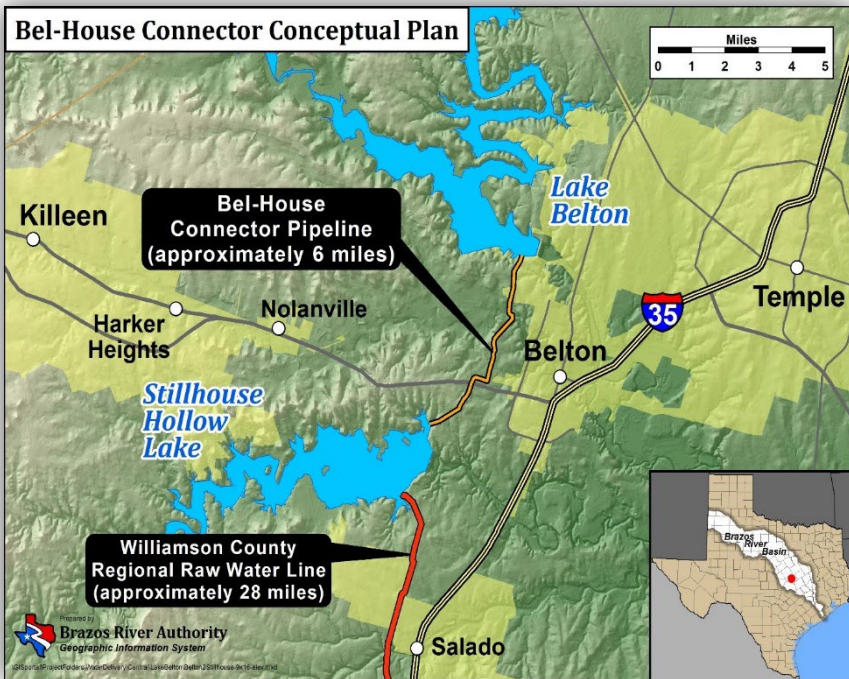
Lake Whitney Storage Reallocation



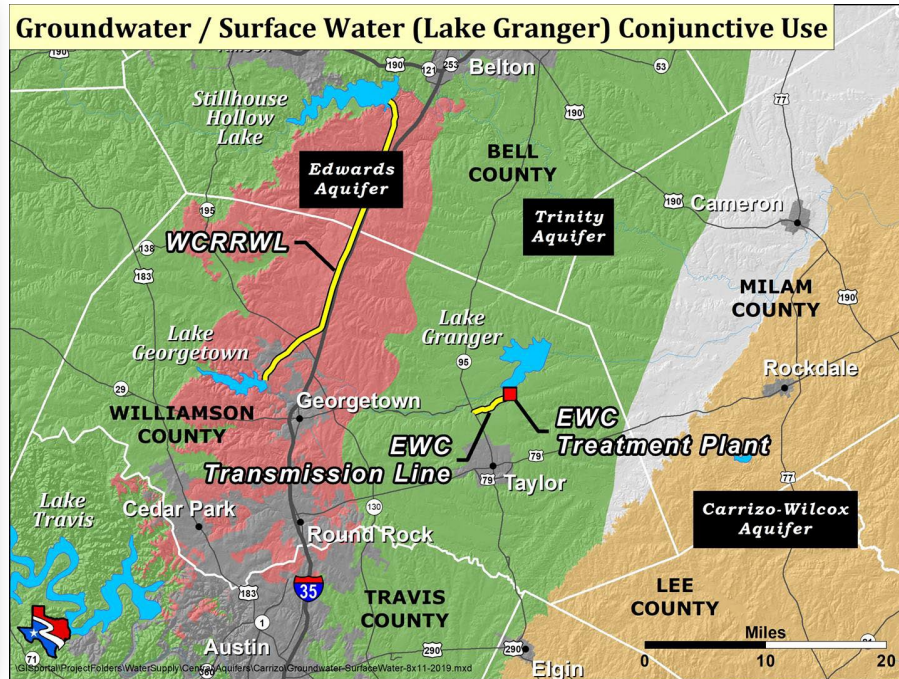


Major Initiatives (cont'd)

Drought Preparedness Measures



Conjunctive Use





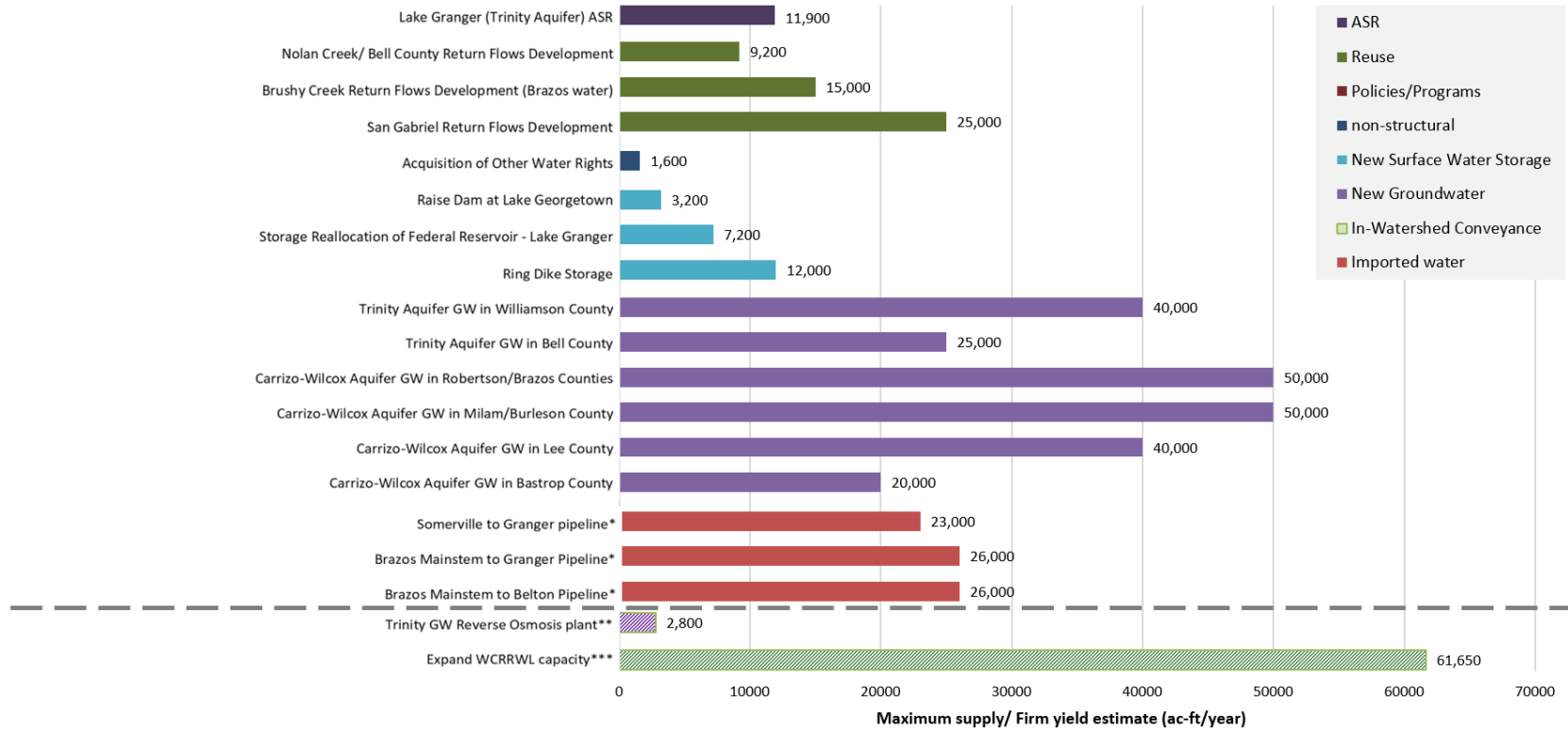
Major Initiatives (cont'd)

Maintaining Aging Infrastructure





Remaining Candidate Strategies - Yield



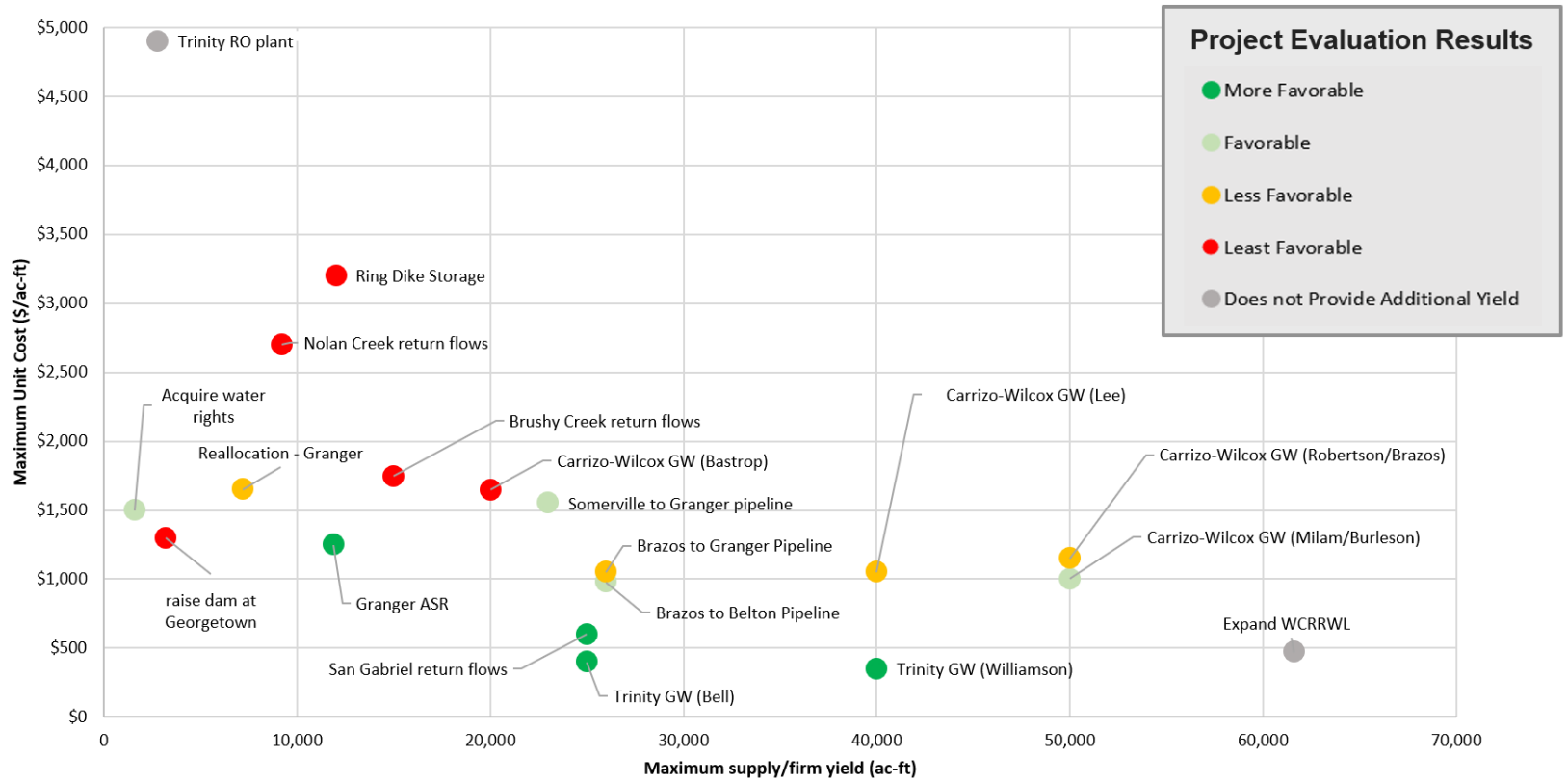
*The imported strategies all assume that sufficient yield is available from the mainstem system; additional new strategies may be required in the Basin to create sufficient yield.

**Strategy does not produce yield independently; supply volume reported is plant treatment capacity for Trinity groundwater wells.

***Strategy does not produce additional firm yield; supply volume reported is the modeled additional conveyance capacity (doubling existing capacity). This strategy would not be implemented unless new supply is brought to Lakes Belton and/or Stillhouse Hollow.



Remaining Candidate Strategies – Project Evaluation Results





Brazos

RIVER AUTHORITY

www.brazos.org



information@brazos.org

www.BrazosBasinNow.org



@BrazosWater



The screenshot shows the website's navigation bar with links for Home, Map, Sites, Dashboards, and Bookmarks. The main content area is titled "Welcome to BrazosBasinNOW" and "Current Brazos River Basin Information". It features three main sections: "Streamflow" with a map of the basin showing red dots for monitoring points; "Reservoirs" with a sunset image over water and a list of metrics including Reservoir Elevation, Reservoir Drawdown, and Percent Capacity; and "Rainfall" with a map showing precipitation levels and a list of metrics including Limestone Mean Areal Precip, Granbury Mean Areal Precip, and Possum Kingdom Mean Areal Precip.



Brazos River Authority